

# WOT 4

## ELECTRIC CONVERSION

This installation involves only minimal modification to the standard kit whilst maintaining, or even enhancing, its structural integrity. It is also a possible retro fit to an already completed model. The performance, using the recommended motor and battery, equates to a .40 size 2-stroke or .65 size 4-stroke IC engine and will hold a vertical climb from take-off on a freshly charged battery! For typical Wot 4 spirited aerobatics expect a flight duration, per battery charge, of around 12 minutes.

Bearing in mind the stresses imposed on an enthusiastically flown Wot 4 we have designed a secure battery installation, using a bolted carrier onto which the battery is tightly strapped with cable ties.

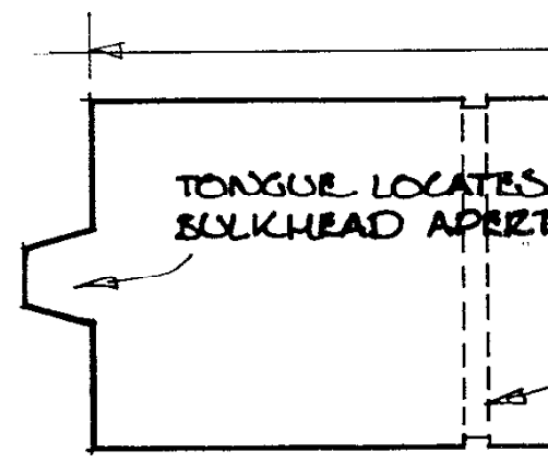
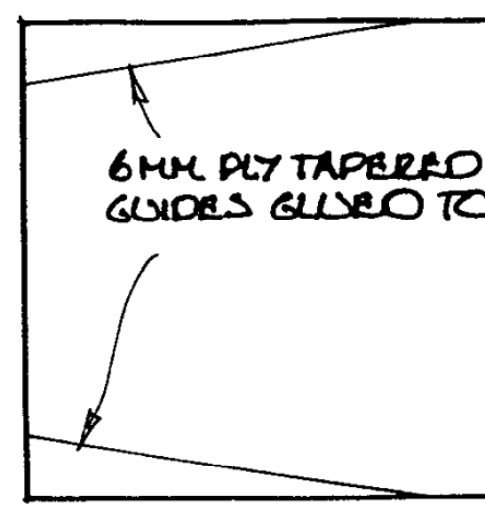
Before starting construction mark and cut out the aperture in bulkhead 4 and enlarge opening in former 8, as shown on the full size drawings. Also infill across top of aperture in former 5 as shown.

Construct fuselage with bulkhead in position A (see Fuselage instruction note 6, page 4).  
 Glue battery tray into fuselage before fitting nose top, ensuring it is accurately positioned against bulkhead, leaving 3mm gap in existing aperture for locating tongue of battery carrier.

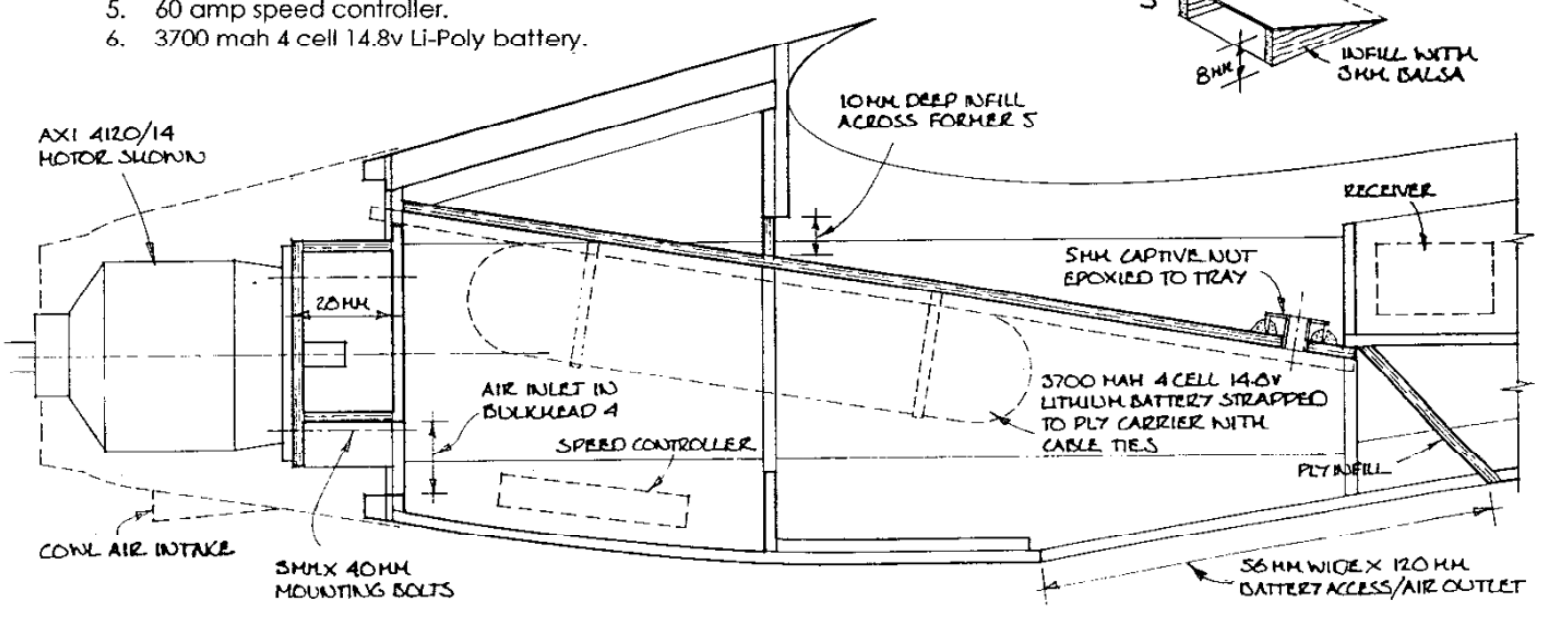
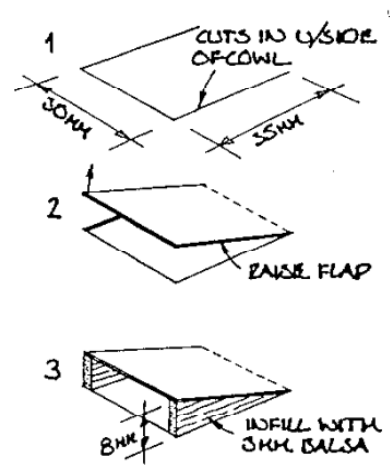
Adjust position of battery on carrier, as necessary, to achieve correct balance of completed model before forming grooves for cable ties.

Additional materials required (not included in the kit):

1. 3mm ply battery tray and carrier.
2. Motor mount – either constructed from 3mm ply as shown, or suitable commercial mount – and fixing bolts.
3. 5mm bolt and captive nut, 2 cable ties.
4. AXI 4120/14 brushless motor, or equivalent, and APC 13 x 8 propeller.
5. 60 amp speed controller.
6. 3700 mah 4 cell 14.8v Li-Poly battery.



### COWL AIR INTAKE



JOIN

TRAY

3MM PLY BATTERY TRAY

6MM DIA. HOLE FOR CAPTIVE NUT

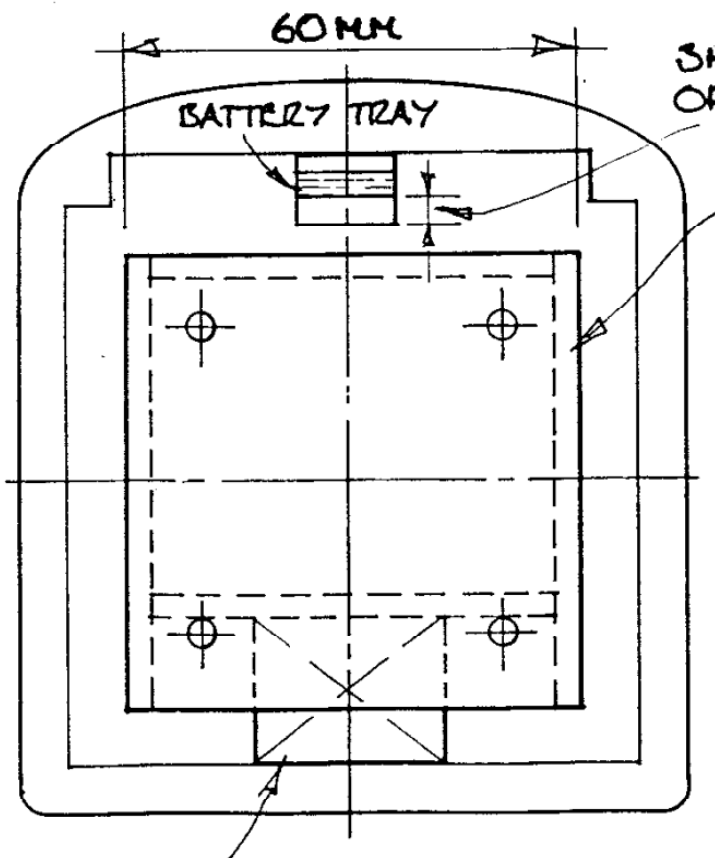
250MM

S INTO  
TURE

3MM PLY BATTERY CARRIER

GROOVES TO LOCATE  
CABLE TIES

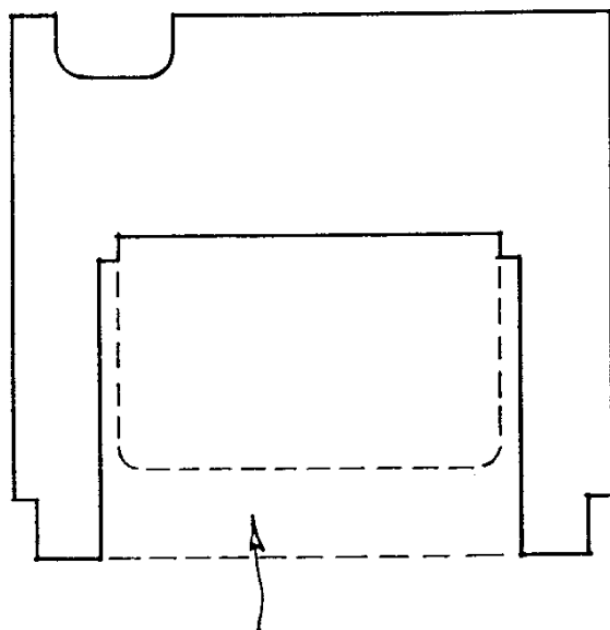
5MM DIA. HOLE FOR RETAINING BOLT



3MM GAP FOR LOCATING TONGUE OF BATTERY CARRIER

MOTOR MOUNTING BOX FROM 3MM PLY

25MM WIDE X 19MM APERTURE IN BULKHEAD 4 FOR AIR INTAKE



REMOVE MATERIAL (DOTTED) FROM FORMER 8